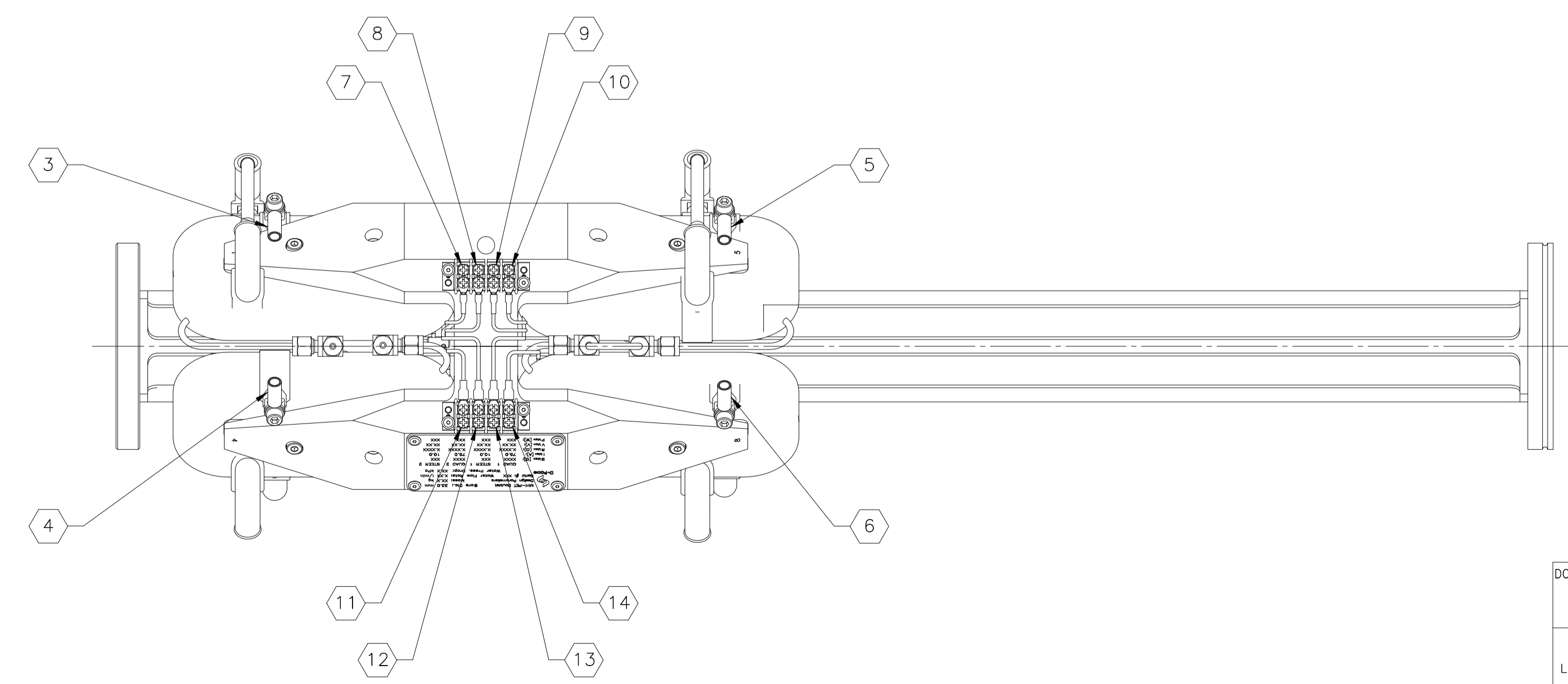
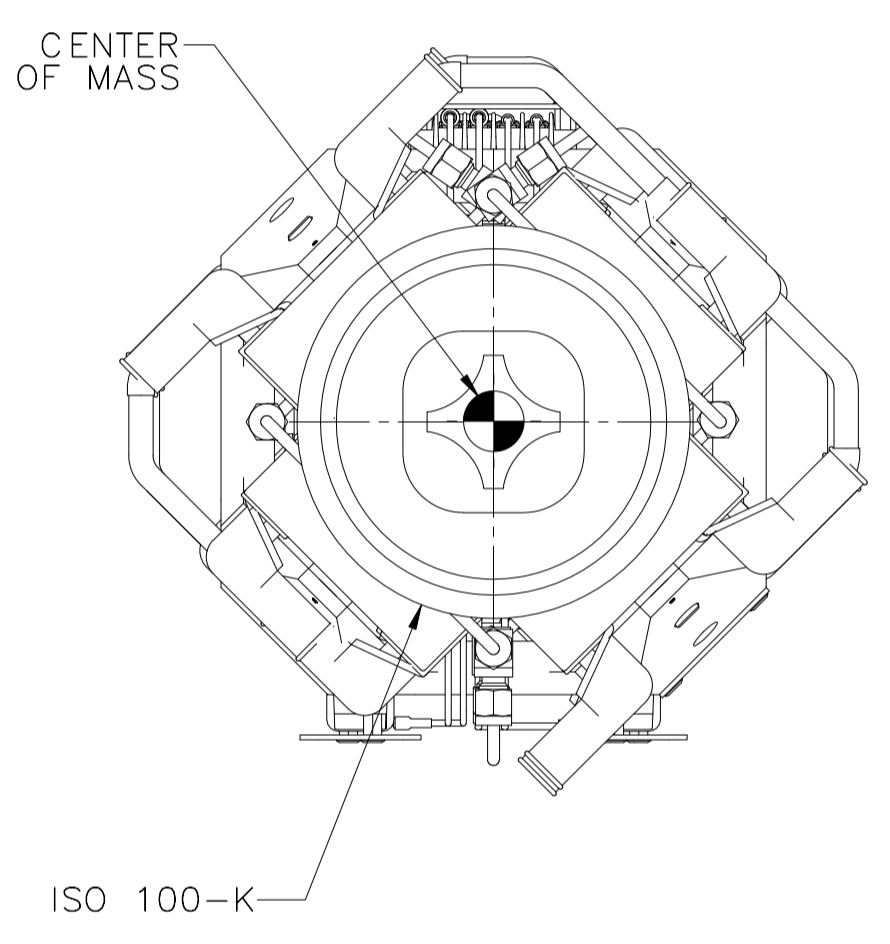
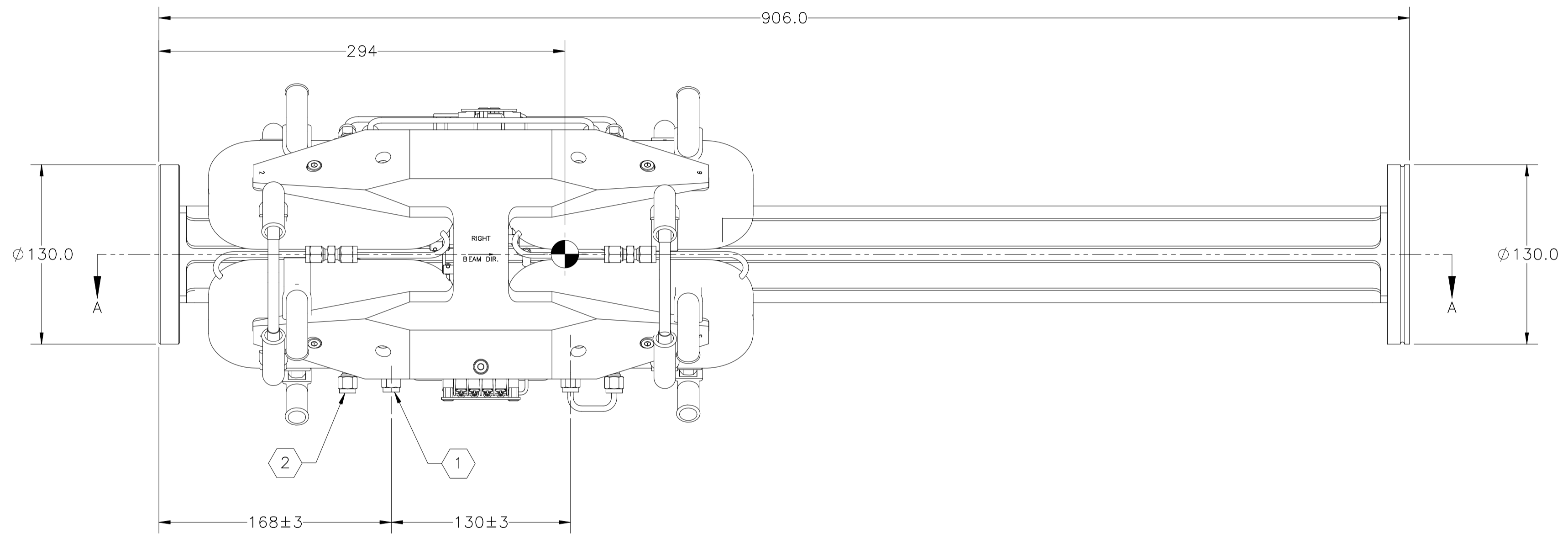
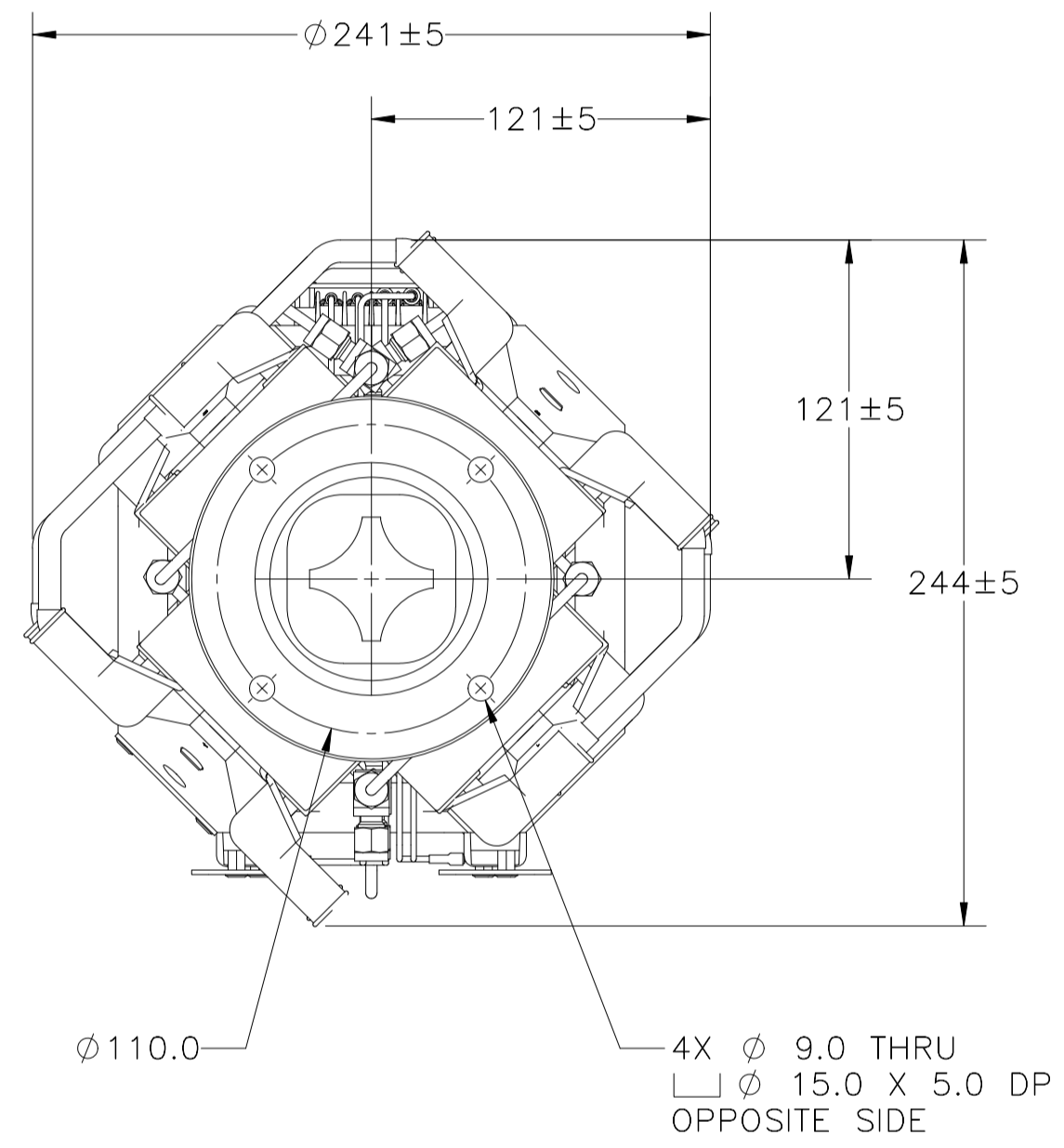
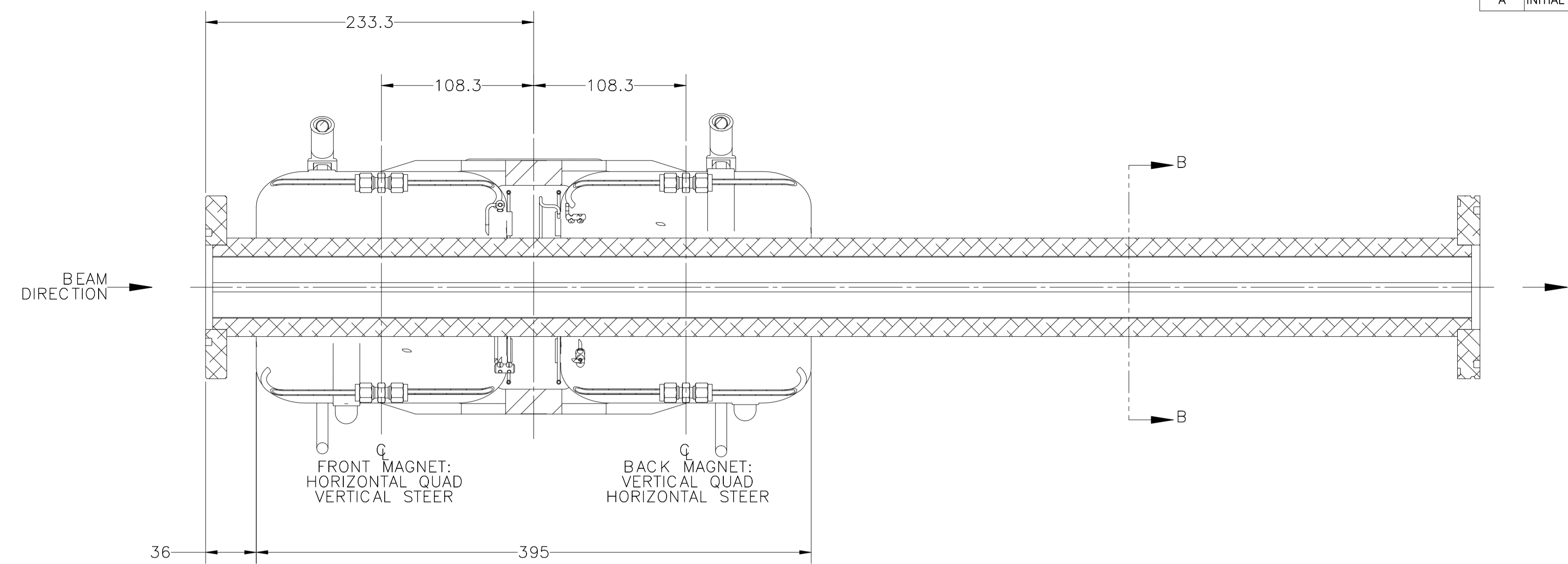
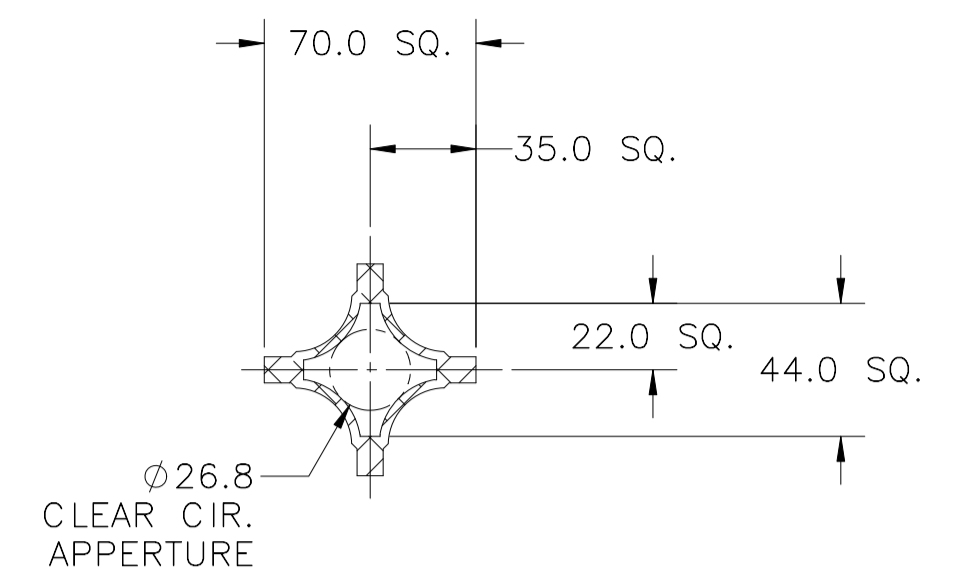


CONFIDENTIALITY  
 THE CONTENTS OF THIS DRAWING INCLUDE CONFIDENTIAL INFORMATION WHICH IS THE SOLE PROPERTY OF D-PACE, INC. ANY USE, DISCLOSURE OR REPRODUCTION OF THIS DRAWING, IN WHOLE OR IN PART, WITHOUT THE PRIOR WRITTEN AUTHORIZATION OF D-PACE, INC. IS STRICTLY PROHIBITED.

REVISION HISTORY					
REV	DESCRIPTION	DCN	BY	DATE	APPROVED
A	INITIAL RELEASE		P.J.	10/06/2016	



CONNECTION TABLE		
LABEL	CONNECTION ITEM	CONNECTION TYPE
1	WATER SUPPLY/RETURN	SWAGE TUBE FITTING, 4 mm O.D.
2	WATER SUPPLY/RETURN	SWAGE TUBE FITTING, 4 mm O.D.
3	HORIZONTAL QUAD POWER +	TERMINAL LUG, CRIMP, 4 AWG (25 mm <sup>2</sup> ) CONDUCTOR
4	HORIZONTAL QUAD POWER -	TERMINAL LUG, CRIMP, 4 AWG (25 mm <sup>2</sup> ) CONDUCTOR
5	VERTICAL QUAD POWER +	TERMINAL LUG, CRIMP, 4 AWG (25 mm <sup>2</sup> ) CONDUCTOR
6	VERTICAL QUAD POWER -	TERMINAL LUG, CRIMP, 4 AWG (25 mm <sup>2</sup> ) CONDUCTOR
7	FRONT MAGNET THERMAL SWITCH SIGNAL +/-	TERMINAL BLOCK WITH RING TERMINAL, 18 AWG (1 mm <sup>2</sup> ) WIRE
8	FRONT MAGNET THERMAL SWITCH SIGNAL +/-	TERMINAL BLOCK WITH RING TERMINAL, 18 AWG (1 mm <sup>2</sup> ) WIRE
9	REAR MAGNET THERMAL SWITCH SIGNAL +/-	TERMINAL BLOCK WITH RING TERMINAL, 18 AWG (1 mm <sup>2</sup> ) WIRE
10	REAR MAGNET THERMAL SWITCH SIGNAL +/-	TERMINAL BLOCK WITH RING TERMINAL, 18 AWG (1 mm <sup>2</sup> ) WIRE
11	VERTICAL STEER POWER +/-	TERMINAL BLOCK WITH RING TERMINAL, 12 AWG (4 mm <sup>2</sup> ) WIRE
12	VERTICAL STEER POWER +/-	TERMINAL BLOCK WITH RING TERMINAL, 12 AWG (4 mm <sup>2</sup> ) WIRE
13	HORIZONTAL STEER POWER +/-	TERMINAL BLOCK WITH RING TERMINAL, 12 AWG (4 mm <sup>2</sup> ) WIRE
14	HORIZONTAL STEER POWER +/-	TERMINAL BLOCK WITH RING TERMINAL, 12 AWG (4 mm <sup>2</sup> ) WIRE

DO NOT SCALE FROM DRAWING METRIC DRAWING ALL DIMENSIONS IN MILLIMETRES	APPROVALS DRAWN P. JACKLE CHECKED	DATE 2016-06-10	DEHNEL - PARTICLE ACCELERATOR COMPONENTS & ENGINEERING, INC. P.O. BOX 201, NELSON BC, CANADA V1L 5P9 TEL: 250-352-5162 FAX: 250-352-3864
TOLERANCES UNLESS OTHERWISE SPECIFIED LINEAR X ±1 X.X ±0.3 X.XX ±0.1 X.XXX ±0.03 ANGULAR ±0.5° SURFACE FINISH 1.6	DESIGN P. JACKLE MODELED P. JACKLE	DATE 2016-04-18	
THIRD ANGLE PROJECTION	MINIPET	SIZE A1	DRAWING NO. 1590328
	NEXT ASSY SYSTEM	SCALE 2:5	REVISION A
	www.d-pace.com	WEIGHT 42.07 kg	SHEET 1 OF 1